

BVLGARI  
HOTEL LONDON



PRIVATE ENTERTAINING AND EVENTS





## A MEMORABLE EXPERIENCE

Together with the convenient and glamorous Knightsbridge location, the Bulgari Hotel London lends a prestigious context to all types of meetings, events and conferences. The stunning facilities are flexible, feature the latest technology and comprise the Ballroom and pre-function area catering for up to 280 guests; two boardrooms for up to 16 delegates; an integrated business centre with two further private offices; and the cinema, a 47-seat private screening room with 2D and 3D Dolby systems. Supported by personal and impeccable service, luminous guest bedrooms and the extravagantly beautiful Bulgari Spa, it creates an unforgettable experience in the heart of London.



## AN UNRIVALLED LOCATION IN THE HEART OF THE CITY

A versatile selection of rooms and elegant dining options make Bulgari Hotel London the perfect choice for entertaining. A grand sweeping staircase leads from Il Bar – the heart of the hotel’s social life – to Rivea London which under the guidance of Alain Ducasse offers French and Italian cuisine in a chic, convivial and relaxed setting. The menu of small plates in Rivea incorporates the classic flavours and vivid colours of the Riviera, with a focus on simple creations using the best ingredients.

The impressive ballroom covers an entire floor of the hotel and features a pair of handcrafted solid silver chandeliers, designed exclusively for Bulgari by Padgham and Putland Silversmiths and are one of the most striking pair of silverware pieces made this century. Ideal for banquets, charity balls, wedding parties and cocktail receptions, the flexible space of the ballroom adds an air of glamour and prestige to every occasion with Alain Ducasse and his team overseeing all food and beverage at the hotel.

# PRIVATE DINING AND EXCLUSIVE EVENTS

A versatile selection of rooms and elegant dining options make Bulgari Hotel London the perfect choice for entertaining. Three private dining rooms, with glamorous silver interiors, can be adapted for corporate seminars, junkets and leisure market events, providing an intimate setting for an important business lunch or a more formal meal during a conference. For the ultimate dining experience Alain Ducasse's team of chefs present exquisite menus featuring seasonal and contemporary cuisine, which can be tailored for any event.

The impressive ballroom covers an entire floor of the hotel and features a pair of handcrafted solid silver chandeliers, designed exclusively for Bulgari by Padgham and Putland Silversmiths and one of the most striking pair of silverware pieces made this century. Ideal for banquets, charity balls, wedding parties and cocktail receptions, the flexible space of the ballroom adds an air of glamour and prestige to every occasion.



# PRIVATE MEETINGS

Located in the integrated Business Centre, the private meeting rooms comprise the two 'Lord Marshall' boardrooms, named after the Baron of Knightsbridge, and three further offices of varying size. All can be easily configured for a variety of business gatherings and events. The sleek interiors of these rooms exude the Italian contemporary style of Antonio Citterio, Patricia Viel and Partners, to create a lavish yet comfortable ambiance, which lends an air of intimate formality to any meeting.

There are two boardrooms, which can host up to 16 seated guests or 30 guests for standing receptions,

two further private offices and the state-of-the-art cinema with 47 seats and featuring 2D and 3D Dolby systems. Guests hiring these rooms benefit from a personal support team and expert AV technicians who ensure the smooth operation of the high-definition video conferencing and web-based technology equipment.

These private meeting spaces are also supported by the hotel's 85 luxurious rooms and suites, as well as the beautiful Bulgari Spa.

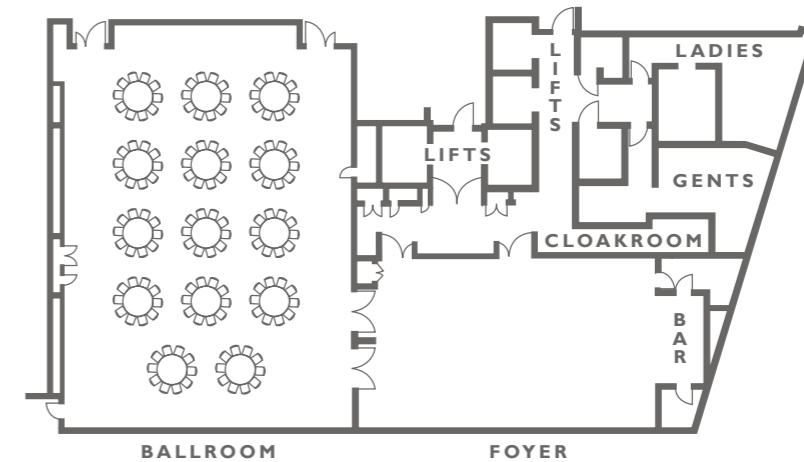




# THE BALLROOM

The stunning Ballroom offers a majestic and stylish space for exclusive conferences and events, fashionable catwalk shows and lectures with theatre style seating. The impressive solid silver custom-made Bulgari chandeliers add timeless elegance. It is serviced by the latest sophisticated lighting and technology, including a loudspeaker system, piped music and wireless Internet.

The Ballroom's foyer area provides the ultimate space for cocktail receptions, a working lunch buffet or coffee breaks during an event. With a built-in bar and the same audio capabilities as the Ballroom, this space provides a flexible solution for any event, intimate or grand.



## CAPACITIES

<b>BALLROOM:</b>		<b>FOYER:</b>	
<i>Dinner seating</i>	140	<i>Cocktail reception</i>	120
<i>Dinner &amp; Dance</i>	120		
<i>Classroom</i>	80		
<i>Theatre</i>	100		
<i>Cocktail reception</i>	280		
<i>(including foyer area)</i>			
<i>U-Shape</i>	50		
<i>Boardroom</i>	50		
<i>Cabaret</i>	80		

## DIMENSIONS

<b>BALLROOM:</b>		<b>FOYER:</b>	
<i>2755 Sq.ft / 256 Sq.m</i>		<i>1151 Sq.ft / 107 Sq.m</i>	
<i>Length: 60ft / 18.36m</i>		<i>Length: 44ft / 13.55m</i>	
<i>Width: 45ft / 13.73m</i>		<i>Width: 26ft / 7.86m</i>	
<i>Height dome:</i>		<i>Height dome:</i>	
<i>22ft / 6.57m</i>		<i>11ft / 3.25m</i>	
<i>Height flat ceiling:</i>		<i>Height flat ceiling:</i>	
<i>11ft / 3.24m</i>		<i>10ft / 3m</i>	





## THE CINEMA AND CINEMA LOUNGE

Providing a unique space in which to host the latest cinematic preview, an important business presentation or a compelling press announcement, the Bulgari Hotel London's luxurious 47-seat cinema offers the most advanced cinema-quality HD sound and vision, 4K resolution in 2D or the latest Dolby 3D. For business events, the room has high-specification video conferencing as well as the latest technologies for broadcasting via satellite or to television news vehicles. The cinema facilities also include integrated technology with individual electronic voting and microphones, as well as dedicated Audio Visual Support. Private security is provided and the room is perfectly insulated to ensure zero sound reverberations.

For a more intimate and exclusive cinema experience, guests can arrange their own personal screenings. Celebrating the hotel's silver screen heritage, a specially-curated library of 200 new and classic films is available along with an eclectic selection of Blu-ray titles, the latest releases available on request, and the option to watch live sports or play games.

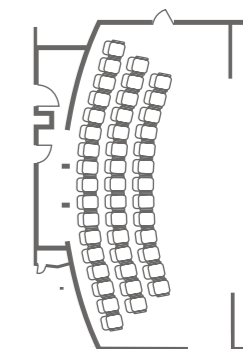
### CAPACITIES

**CINEMA:**  
*Theatre* 47  
**CINEMA LOUNGE:** 47

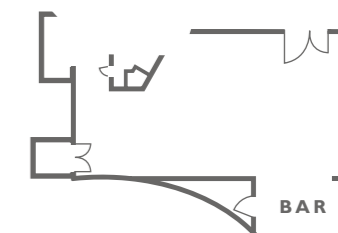
### DIMENSIONS

**CINEMA:**  
 1054 Sq.ft / 98 Sq.m  
 Length: 46ft / 14m  
 Width: 23ft / 7m  
 Height: 10ft / 3m

**CINEMA LOUNGE:**  
 699 Sq.ft / 65 Sq.m  
 Length: 26ft / 8m  
 Width: 16ft / 5m  
 Height: 8ft / 2.5m



CINEMA



CINEMA  
LOUNGE





For the ultimate silver screen experience, combine a movie with private dining held in the cinema lounge, where up to 20 guests can be seated before moving to the adjoining cinema with popcorn for the show.

For larger or corporate events, extensive bowl food menus are served in the cinema lounge, which can comfortably accommodate 47 standing guests, with drinks served from the ribbed steel bar.



# CINEMA SPECIFICATION

## THE CINEMA

- Dedicated audio visual technician
- Lectern with touch-screen control and comfort monitor
- Lectern microphone
- Lectern-based PC with DVD-ROM and USB connections
- Wireless microphones (2x lapel – 2x handheld)
- Interactive voting system (integrated in seats) with microphone
- High-definition digital cinema projector
- Dual-screen presentation with two HD secondary projectors
- Cinema-quality screen with electronic size masking
- Theatre stage lighting
- Voice reinforcement system and PA
- Induction loop for hard of hearing
- High-definition video conference facilities
- Surround programme sound system
- Visual mixing and sources (DCP, DVD / Blu-ray playback)
- CD playing
- Connections for computer and additional video sources
- Control switches for volume and media switching
- D-Cinema compliant content server
- 7.1 surround sound system
- Hotel television and radio channels

## CINEMA LOUNGE

- 46" and 55" Loewe high definition LCD screens to run content from the screening room
- Professional Bose speaker sound system
- Piped music

## TECHNICAL SPECIFICATION

- Projection
- 3 projectors, 1x primary and screening
- Projector with 2x secondary and split screen
- Dual projection

- Primary projection – 4K NEC DCP compliant
- Cinema projector NC3240 – 3 chip DLP based projector, lens and PSU
- 2x JVC DLA-x7 HD projectors (for dual projection)

## PLAYBACK SOURCES

- Dolby feature cinema server – DSS200
- Oppo multi-region Blu-ray / DVD player
- PlayStation 3 gaming system
- Sky HD satellite receiver and playback
- Hotel IPTV system HD
- Barco Image Pro2 visual mixing
- HD-SDI inputs

## SOUND SYSTEM

- 7.1 surround sound JBL Synthesis system for programme sound
- JBL SDP-40HD digital surround processor
- JBL SDEC-4000 system digital equalizer
- 5 JBL S820 two-channel amplifier 800W bridged mono
- JBL S7165 seven-channel power amplifier
- 3 JBL K2S 9900 Atlas speakers
- 6 JBL S4Ai dipole ambient surround speakers and brackets
- 2 JBL SIS-EX 18" subwoofers

## PUBLIC ADDRESS

- A300 induction loop amplifier with metal loop
- 2 x JBL 100v line Control 1 surface mounted speakers
- 8 x JBL 100v line flush-mounted Control 1 ceiling speakers for PA System
- 3x radio handheld microphones
- 3x radio lapel microphones
- 2 x lectern microphones
- Soundcraft FX16ii mixer – 16 channel with recording outputs

## SCREEN

- SMX 8.8m x 2.2m white woven fabric projection screen with side and centre motorised masking
- 2.35:1 – 516x220cm

- 1.85:1 – 407x220cm
- 16:9 – 390x220cm

## CONTROL

- Lectern and room-based touch-screen control
- Crestron TPS-6X cordless touch screen and docking station
- Crestron room control touchscreen DM-RMC-100-F in control room
- Furman power conditioning PL-Pro DMC E presentation switcher from composite video, S-video, component
- Video, RGBHV, VGA, DVI, HDMI, PC audio, analogue audio, SPDIF inputs

## LECTERN

- 3x lectern positions
- Black bespoke lecterns 123.5x95cm front 63cm deep with connections for data and power
- Built-in presentation PC
- Branding window on front of lectern 46.5x37cm (1.5cm deep maximum)
- Two lecterns – for dual presentation

## SCREENING SPECIFICATION

- Dolby cinema server DSS200
- Barco Image Pro HD visual mixer
- Dolby CP750 audio processor
- 7.1 surround sound JBL Synthesis system for programme sound

## SEATING

- 47 black leather seats with power and pull-out table
- 3 tiers of chairs, middle 6 and 2 side chairs front row, removable for bespoke black leather sofa or wheelchair

## VIDEO CONFERENCE

- Cisco C60 system
- 1080p single/dual screen
- High-speed IP connection
- Point-to-point conferencing



# LORD MARSHALL BOARDROOMS

The hotel offers two boardrooms specifically for meetings and private conferences. Away from the busier parts of the hotel, the Lord Marshall boardrooms offer a tranquil space for the

meeting of minds to discuss, debate and inspire. Both are fully equipped with conference and presentation facilities.

## CAPACITIES

**LORD MARSHALL I :**  
Boardroom for up to 8  
guests with AV  
Boardroom for up to 10  
guests without AV

**LORD MARSHALL I & II**  
Boardroom for up to 14  
guests with AV  
Boardroom for up to 16  
guests without AV

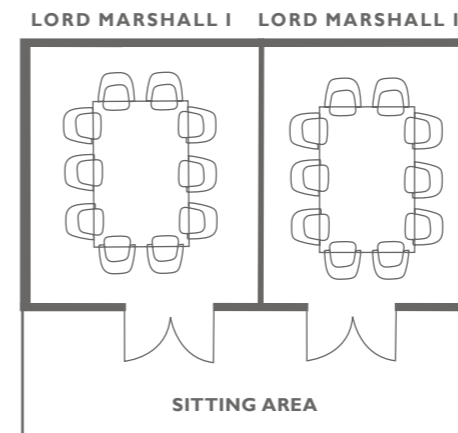
**LORD MARSHALL II:**  
Boardroom 10

## DIMENSIONS

**LORD MARSHALL I :**  
193 Sq.ft / 18 Sq.m  
Length: 13ft / 4m  
Width: 16ft / 5m  
Height: 10ft / 3m

**LORD MARSHALL I & II**  
398 Sq.ft / 37 Sq.m  
Length: 26ft / 8m  
Width: 33ft / 10m  
Height: 10ft / 3m

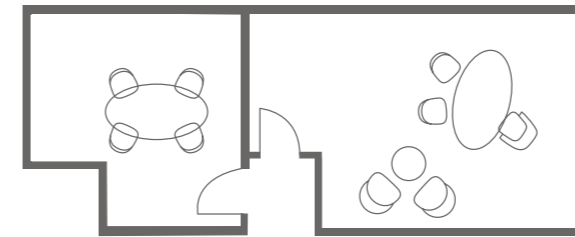
**LORD MARSHALL II:**  
190 Sq.ft / 18 Sq.m  
Length: 13ft / 4m  
Width: 16ft / 5m  
Height: 10ft / 3m





# PRIVATE OFFICES

The more intimate surroundings of our two business offices are perfect for smaller gatherings such as interviews, meetings or conference calls.



OFFICE B

OFFICE A

## CAPACITIES

OFFICE A:	OFFICE B:
Boardroom	Boardroom
3	4

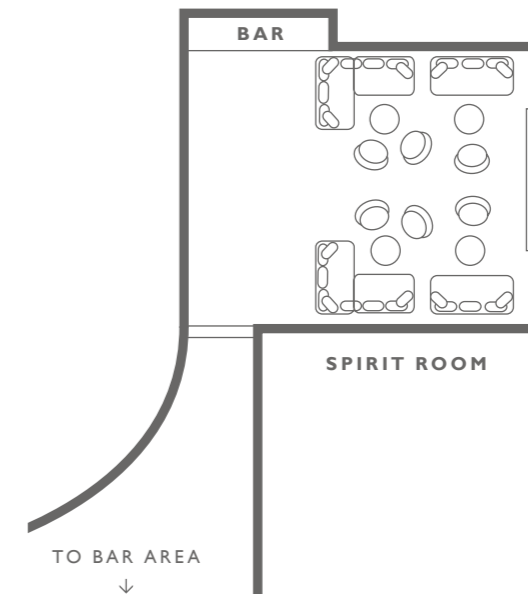
## DIMENSIONS

OFFICE A:	OFFICE B:
182 Sq.ft / 17 Sq.m	139 Sq.ft / 13 Sq.m
Length: 13ft / 4m	Length: 13ft / 4m
Width: 16ft / 5m	Width: 10ft / 3m
Height: 10ft / 3m	Height: 10ft / 3m



## SPIRIT ROOM

The Spirit room offers an elegant, intimate and private space for pre-dinner aperitifs, after dinner drinks, or a Bulgari Afternoon Tea, with friendly and attentive service from Il Bar staff. Adorning the walls are photographs from the Bulgari archive depicting stars of the 'La Dolce Vita' era. Subdued lighting, wooden décor and intimately positioned clusters of custom-made sofas and armchairs surround a working fireplace and create a cosy and relaxed atmosphere. The Spirit room is available for private hire and can host up to 20 people.



### CAPACITIES

*Spirit Room* 20

### DIMENSIONS

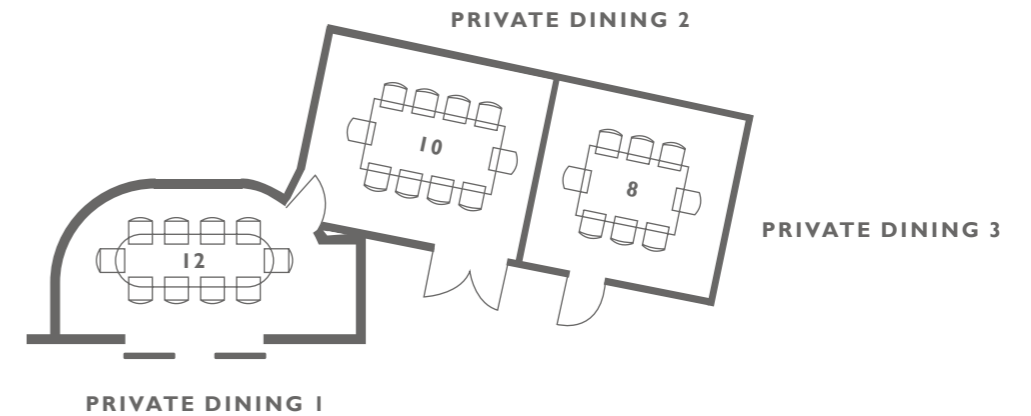
398 Sq.ft / 37 Sq.m  
 Length: 20ft / 6m  
 Width: 16ft / 5m  
 Height: 9ft / 2.7m



# PRIVATE DINING

Offering a sleek and cosy design with chandeliers of lotus leaves seemingly floating in the air, Rivea's private dining rooms are adorned with a diverse collection of tableware that bring with them colour and vibrancy. The collection allows the kitchen and front of house

team to play, mix and match the items according to the dishes and menus. Rivea's private dining room can accommodate up to 12 guests. Additionally, 2 private spaces host 10 and 8 guests with the option to connect the two rooms for larger groups of 18-20 guests.



## CAPACITIES

**PRIVATE DINING 1:**  
*Banqueting* 12  
*Boardroom* 12

**PRIVATE DINING 2:**  
*Banqueting* 10  
*Boardroom* 10

**PRIVATE DINING 3:**  
*Banqueting* 8  
*Boardroom* 8

**PRIVATE DINING 2 & 3:**  
*Banqueting* 20  
*Boardroom* 20

## DIMENSIONS

**PRIVATE DINING 1:**  
 182 Sq.ft / 17 Sq.m  
 Length: 20ft / 6m  
 Width: 10ft / 3m  
 Height: 10ft / 3m

**PRIVATE DINING 2:**  
 215 Sq.ft / 20 Sq.m  
 Length: 16ft / 5m  
 Width: 13ft / 4m  
 Height: 10ft / 3m

**PRIVATE DINING 3:**  
 172 Sq.ft / 16 Sq.m  
 Length: 13ft / 4m  
 Width: 13ft / 4m  
 Height: 10ft / 3m

**PRIVATE DINING 2 & 3:**  
 387 Sq.ft / 36 Sq.m  
 Length: 10ft / 9m  
 Width: 13ft / 4m  
 Height: 10ft / 3m

# COMPLETE COLLECTION



## BEDROOMS

Rooms are spacious; the largest in London, and elegantly designed featuring marbles, fine woods and unique detailing such as custom-made silk curtains, bedside table lamps inspired by Bulgari's silver candlesticks, and a minibar resembling a travel trunk.



## SUITES

Twenty three suites are available, all benefiting from a dedicated Butler service. The seven Bulgari Suites are the hotel's largest and feature luxurious bedrooms, living and dining room and contemporary kitchen.



## POOL

The Bulgari Spa features a 25m swimming pool, created from Vicenza stone and shimmering green and gold mosaic. Sumptuous cabanas with flowing fabric flank the pool for guests to relax in.



## GYM

A state-of-the-art gymnasium designed entirely in cognac-coloured oak, is equipped with the latest Technogym cardiovascular and strength machines and free-weights area. Personal trainers from Workshop Gymnasium are on hand to train and advise.



## RIVEA

Inspired by the many years Alain Ducasse spent visiting the vibrant food markets in Italy and Provence, Rivea London offers French and Italian cuisine in a chic, convivial and relaxed setting with informal yet impeccable service.



## IL BAR

At the heart of the hotel's social life and the place to enjoy La Dolce Vita. Exquisite cocktails, some inspired by the Bulgari perfume range, are served by expert mixologists from the impressive stainless steel, oval bar.



## LOUNGE

The lounge is the perfect place to enjoy a Bulgari Afternoon Tea, featuring a range of tea blends exclusively created for the hotel, or coffee and pastries throughout the day.



## LOBBY

The stylish and welcoming lobby, home to the reception and concierge team, features polished black granite floors, Sapele mahogany walls and striking display cases showcasing contemporary Bulgari silver and other Bulgari products.



## BALLROOM

A majestic and stylish space for fashionable private events. Impressive solid silver, custom-made chandeliers add a timeless elegance to any event and an additional function area provides the ideal space for pre-event entertaining.



## OFFICES

Two business offices provide more intimate surroundings for smaller gatherings such as interviews, meetings or conference calls. Seating in theatre style can be requested to accommodate a maximum of ten people in each office.



## LORD MARSHALL BOARDROOMS

Lord Marshall Boardrooms offer a tranquil space, fully equipped with conference and presentation facilities, for meetings and private conferences. Each hosting up to ten guests for a banquet-style meeting, the Lord Marshall boardrooms can be combined for larger events.



## PRIVATE DINING

Three Private Dining Rooms, perfect for a more intimate dining experience, feature elegant interiors and bespoke menus by the head chef. Hosting eight, ten and 12 guests, there is the option to connect two rooms for larger groups of 20 guests.



## CINEMA

A luxurious 47-seat screening room offers state-of-the-art cinema-quality sound and vision and an exclusively-curated library of more than 200 new and classic films available to guests of the hotel.



## CIGAR SHOP & SAMPLING ROOM

Located up a discreet stairway from Il Bar is an intimate space for cigar aficionados to enjoy a rare and exquisite cigar collection, sourced exclusively from the 'jewels' of Edward Sahakian's private collection.



## SPIRIT ROOM

An intimate area adjacent to Il Bar for up to 20 guests to enjoy a more private bar experience. A large fireplace is set into the wall and photographs from the Bulgari archive depicting 'La Dolce Vita' era adorn the room.

# THE PRIVATE COLLECTION



## BALLROOM

Banqueting 140	Dinner / dance 120	Theatre 100	Cocktail reception 160	U-shaped 50	Boardroom 50
Dimensions: 2755 Sq.ft / 256 Sq.m		Length: 60ft / 18.36m	Width: 45ft / 13.73m	Height (flat): 11ft / 3.2m	Height (dome): 22ft / 6.5m



## BALLROOM FOYER

Banqueting	Dinner / dance	Theatre	Cocktail reception 120	U-shaped	Boardroom
Dimensions: 1151 Sq.ft / 107 Sq.m		Length: 44ft / 13.55m	Width: 26ft / 7.86m	Height (flat): 10ft / 3m	Height (dome): 11ft / 3.25m



## LORD MARSHALL BOARDROOMS

Banqueting	Dinner / dance	Theatre	Cocktail reception	U-shaped	Lord Marshall I/II 10
Dimensions Lord Marshall I/II: 190 Sq.ft / 18 Sq.m		Length: 13ft / 4m	Width: 16ft / 5m	Height: 10ft / 3m	

Banqueting	Dinner / dance	Theatre	Cocktail reception	U-shaped	Lord Marshall I&II 16
Dimensions Lord Marshall I&II: 393 Sq.ft / 37 Sq.m		Length: 26ft / 8m	Width: 33ft / 10m	Height: 10ft / 3m	



## CINEMA

Banqueting	Dinner / dance	Theatre 47	Cocktail reception	U-shaped	Boardroom
Dimensions: 1054 Sq.ft / 98 Sq.m		Length: 46ft / 14m	Width: 23ft / 7m	Height: 10ft / 3m	



## SPIRIT ROOM

Banqueting	Dinner / dance	Theatre	Cocktail reception 20	U-shaped	Boardroom
Dimensions: 398 Sq.ft / 37 Sq.m		Length: 20ft / 6m	Width: 16ft / 5m	Height: 9ft / 2.7m	



## CINEMA LOUNGE

Banqueting	Dinner / dance	Theatre	Cocktail reception 47	U-shaped	Boardroom
Dimensions: 699 Sq.ft / 65 Sq.m		Length: 26ft / 8m	Width: 16ft / 5m	Height: 8ft / 2.5m	



## PRIVATE OFFICES

Office A:	Dinner / dance	Theatre	Cocktail reception	U-shaped	Boardroom 3
Dimensions: 699 Sq.ft / 65 Sq.m		Length: 26ft / 8m	Width: 16ft / 5m	Height: 8ft / 2.5m	

Office B:	Dinner / dance	Theatre	Cocktail reception	U-shaped	Boardroom 4
Dimensions: 139 Sq.ft / 13 Sq.m		Length: 13ft / 4m	Width: 10ft / 3m	Height: 10ft / 3m	



## PRIVATE DINING

Private dining 1:	Banqueting 12	Theatre	Cocktail reception	U-shaped	Boardroom 12
Dimensions Private dining 1: 182 Sq.ft / 17 Sq.m		Length: 20ft / 6m	Width: 10ft / 3m	Height: 10ft / 3m	

Private dining 2:	Banqueting 10	Theatre	Cocktail reception	U-shaped	Boardroom 10
Dimensions Private dining 2: 139 Sq.ft / 13 Sq.m		Length: 16ft / 5m	Width: 13ft / 4m	Height: 10ft / 3m	

Private dining 3:	Banqueting 8	Theatre	Cocktail reception	U-shaped	Boardroom 8
Dimensions Private dining 3: 172 Sq.ft / 16 Sq.m		Length: 13ft / 4m	Width: 13ft / 4m	Height: 10ft / 3m	

Private dining 2&3:	Banqueting 20	Theatre	Cocktail reception	U-shaped	Boardroom 20
Dimensions Private dining 2&3: 387 Sq.ft / 36 Sq.m		Length: 10ft / 9m	Width: 13ft / 4m	Height: 10ft / 3m	

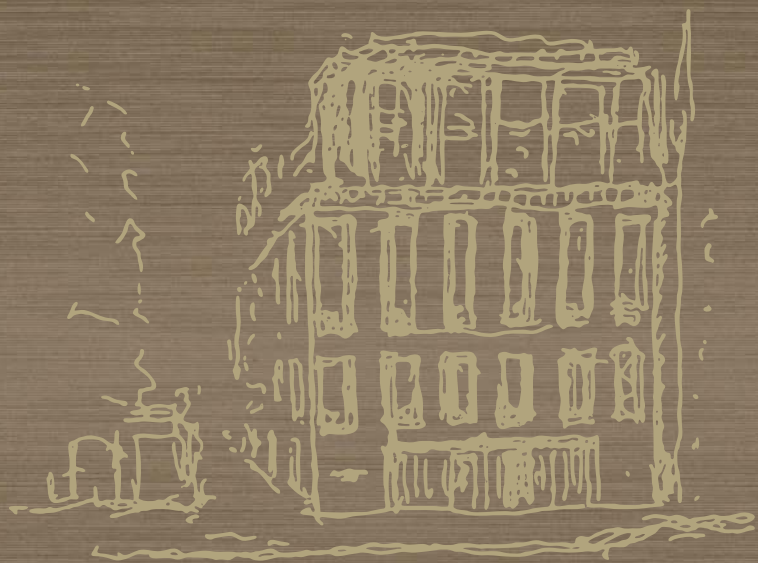
## **CONTACT DETAILS**

Bulgari Hotel London,  
171 Knightsbridge,  
London, SW7 1DW,  
United Kingdom

Tel: +44 (0)20 7151 1039/1040

Email: [London-events@bulgarihotels.co.uk](mailto:London-events@bulgarihotels.co.uk)





Julio Allen